

Beechwood, Knutsford, WA16 8AR

£478,000

Council Tax Band: D



Nestled in the charming area of Beechwood, Knutsford, this beautifully presented three-bedroom detached bungalow offers a perfect blend of comfort and convenience. This property is ideal for those seeking a peaceful retreat while remaining close to the vibrant town centre.

Upon entering, you will be greeted by a spacious reception room that exudes warmth and invites relaxation. The modern kitchen is a highlight of the home, featuring contemporary fittings that make cooking a delight. With three bedrooms (one currently used as a study) and a bathroom and an additional wc/utility, this bungalow provides ample space for both residents and guests, ensuring privacy and comfort.

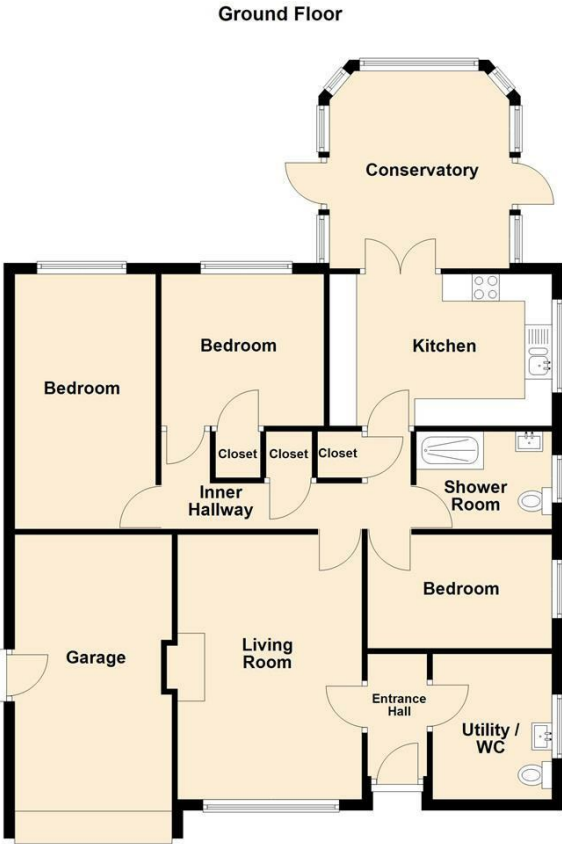
The property has been lovingly maintained and is well presented, allowing you to move in without the need for immediate renovations. The absence of a chain further simplifies the buying process, making it an attractive option for prospective homeowners.

Outside, the bungalow boasts a convenient driveway, providing off-road parking and easy access. The location is particularly appealing, as it is situated within close proximity to the town centre, where you can enjoy a variety of shops, cafes, and local amenities.

This delightful bungalow in Beechwood is a rare find, offering a harmonious lifestyle in a sought-after area. Whether you are looking to downsize or seeking a tranquil home, this property is sure to impress. Do not miss the opportunity to make this charming bungalow your own.



Open House East Cheshire



Total area: approx. 108.8 sq. metres (1171.2 sq. feet)

All measurements are given solely for purposes of visual representation. Please refer to property description for full dimensions and details.

OPEN HOUSE ESTATE AGENTS EAST CHESHIRE
Plan produced using PlanUp.



Energy Efficiency Rating		
	Current	Potential
Very energy efficient - lower running costs		
(92 plus) A		
(81-91) B		
(69-80) C		
(55-68) D	60	70
(39-54) E		
(21-38) F		
(1-20) G		
Not energy efficient - higher running costs		
England & Wales	EU Directive 2002/91/EC	